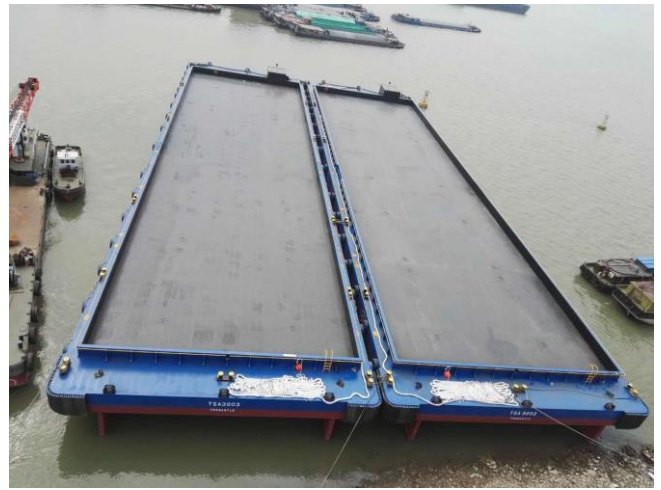


Vessel Specifications

TSA 3002

Deck Cargo Barge



Flag State / Port of Registry	Australia / Fremantle
Official No.	862488
Classification / Notation	BV+PONTOON I HULL UNRESTRICTED
Year Built	2019
Length / Breadth / Depth	300ft (91.50m) / 80ft (24.40m) / 18ft (5.50m)
Cargo Deadweight / Design Draft	7500t (Approx.) / 4.295m
GT / NT	3231 / 969
Deck Load	7t/m ²
Deck, Side & Bottom Plate	12mm
Deck Fittings	1.2m Sideboards
Mooring Bollards	14 x Mooring Bollards 20t SWL
Towing Brackets	4 x Smit Brackets 120t SWL
Boarding Ladders	6 x Recessed Boarding Ladders
Side Door	2 x Removable Side Doors 4.2m Wide
Fendering	34 x Tyre Fenders dia. 1270mm x 455mm / M Fendering M800 x 400 Four Corners
Anchor System	Anchor Winch 10t Diesel Driven winch 80m x 28mm dia. Anchor wire rope
Navigation	Solar Powered Navigation Lights COLREG Approved Type / Towing Diamond Shape
Towing Gear	All Towing Gear Certified
Life Saving Appliances	SOLAS Approved Life Saving Appliances. 4 x Life Buoys, 2 with lights, 2 with ropes (Floating line 30m x 8mm)
Tanks	No Ballast Tanks.